

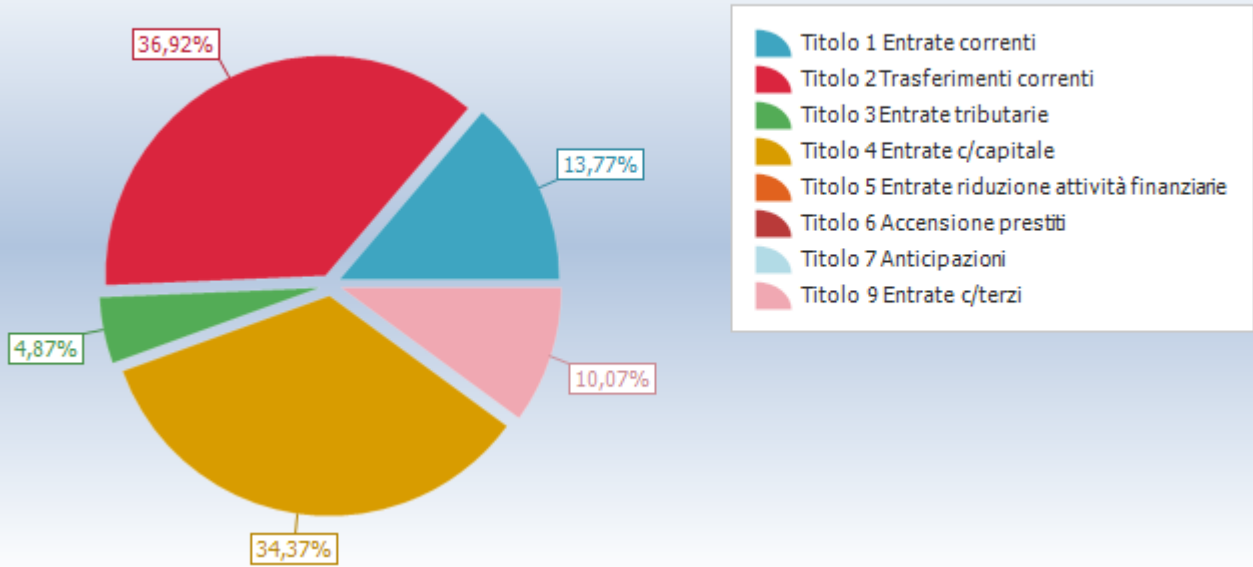


# **COMUNE DI BULTEI**

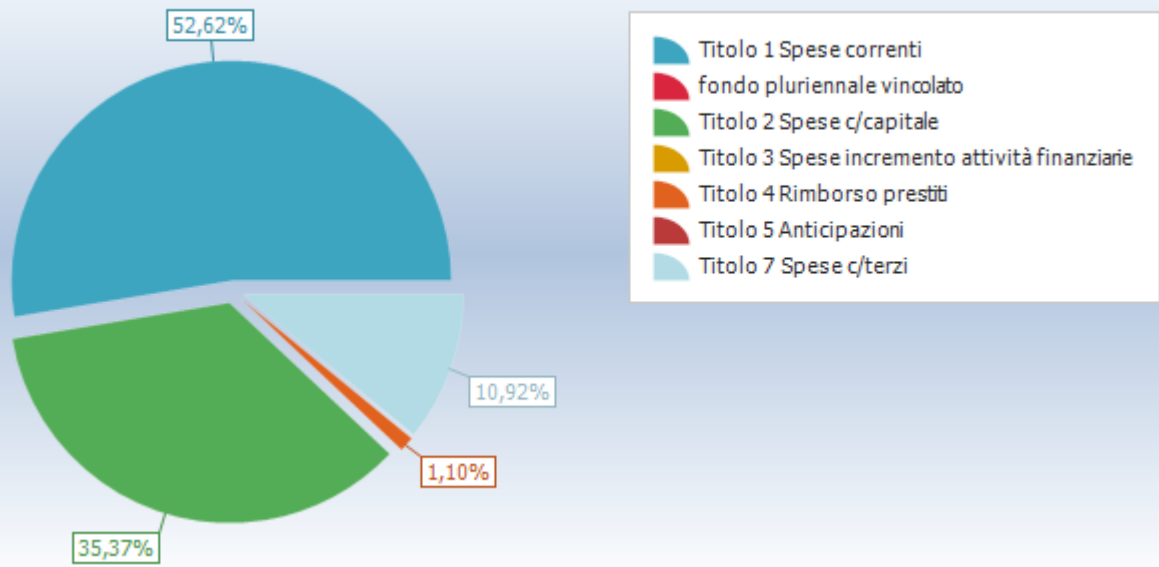
**RAPPRESENTAZIONE GRAFICA  
BILANCIO CONSUNTIVO**

LA GESTIONE DI COMPETENZA

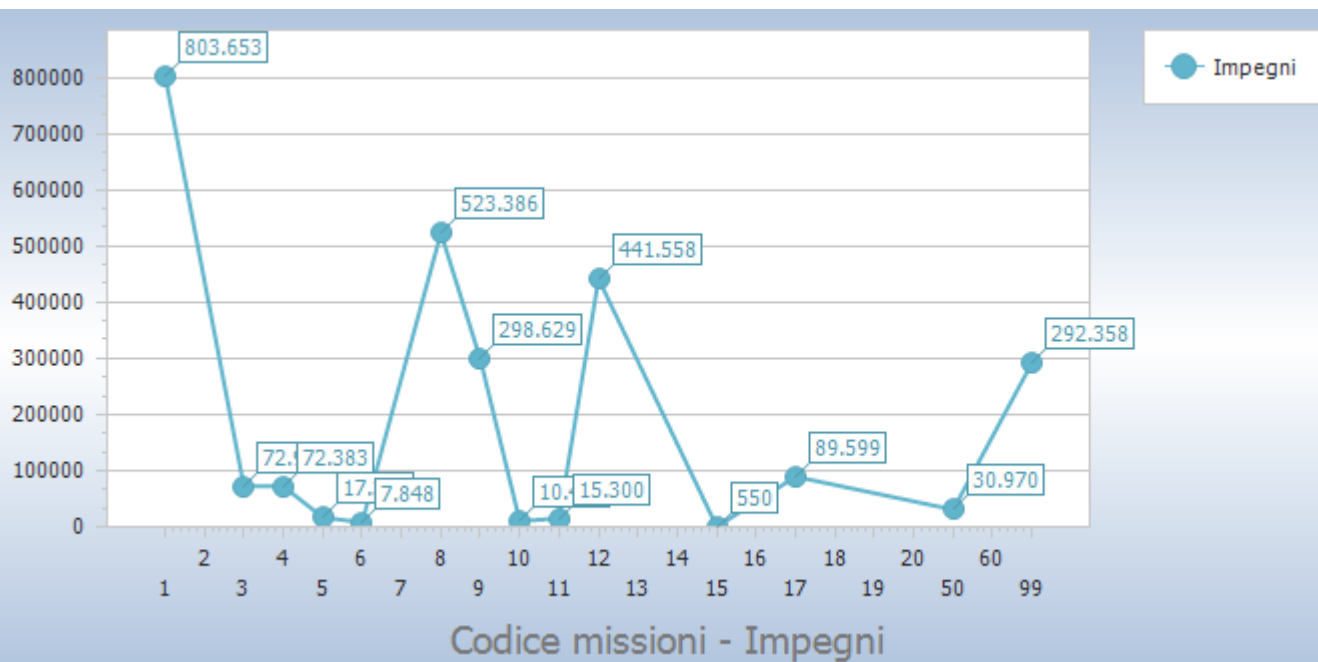
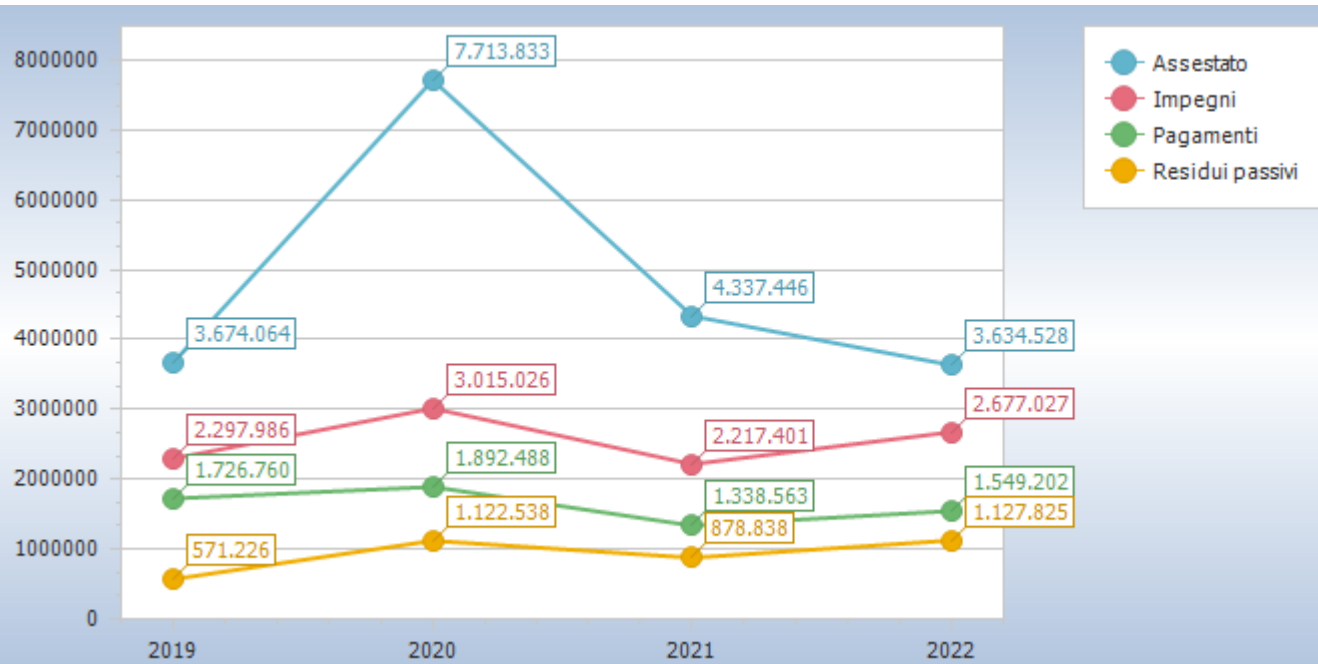
Accertamenti

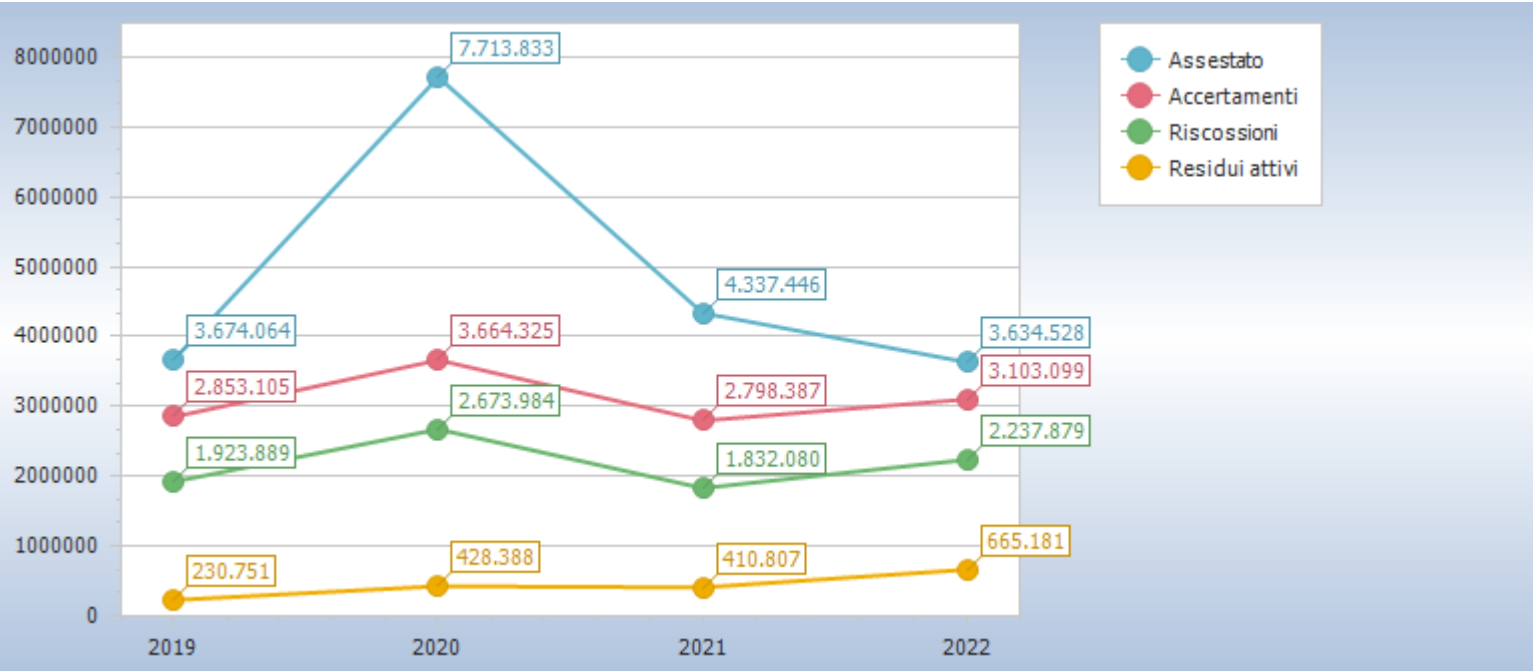


Impegni

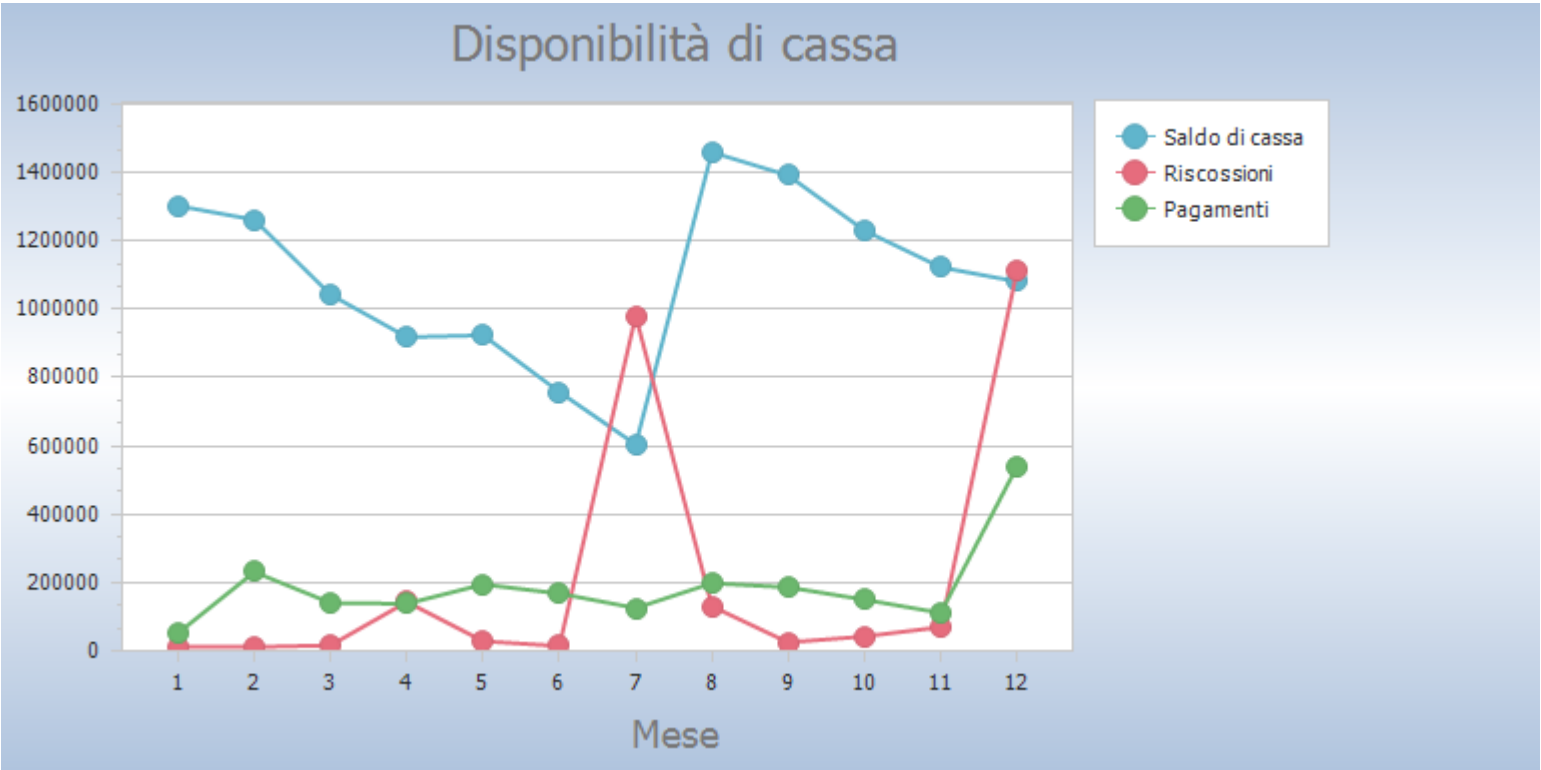


## EQUILIBRI DI BILANCIO



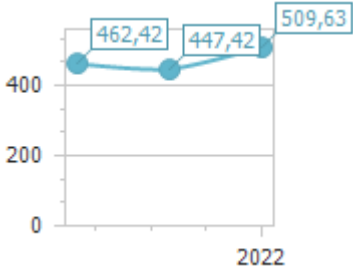


LA GESTIONE DI CASSA



LA SPESA PER IL PERSONALE

Spesa personale pro-capite						
	Anno 2020		Anno 2021		Anno 2022	
Spesa personale	399.995,85	462,42	382.548,11	447,42	429.107,81	509,63
Popolazione	865		855		842	



Anno	Spesa personale pro-capite
2020	462,42
2021	447,42
2022	509,63